

# PRICE LIST

1 OCTOBER 2017



**Western Cape:**  
Saxenburg Road, Blackheath, Cape Town  
PO Box 281 Kuilsriver, 7579, South Africa  
Tel +27 (0)21 907 1900 Fax +27 (0)21 907 1999

**Gauteng:**  
48 Malcolm Moodie Crescent, Jetpark, Gauteng  
PO Box 25769, East Rand, 1462, South Africa  
Tel +27 (0)11 396 6000 Fax +27 (0)11 397 4019

**Kwa-Zulu Natal:**  
9 Clubhouse Place, Westmead, Pinetown  
PO Box 1076, Pinetown, 3600, South Africa  
Tel +27 (0)31 792 1020 Fax +27 (0)31 792 1018  
Email salespine@burquip.co.za

Rubbaride Axles	Pg. 3 - 4
Standard High Speed Axles - Up To 3500kg	Pg. 5 - 8
Bearing Kits	Pg. 9 - 10
Agricultural Implement Axles	Pg. 11
Standard High Speed Axles - 3500kg To 13000kg	Pg. 12
Wheels	Pg. 13 - 16
Hydraulic Cylinders	Pg. 17 - 22
Tie-Rod Cylinders	Pg. 23 - 24
Turntables	Pg. 25
Power Take-Off Series	Pg. 26 - 29
Couplers	Pg. 30
Landing Gear	Pg. 31 - 32
Suspensions	Pg. 33-36
Electrical Components	Pg. 37
Body Components	Pg. 38
Mud Gaurds	Pg. 39

Burquip International (Pty) Ltd  
October 2017

Product specifications in this publication are subject to change without prior notice.

Prices are exclusive of VAT and are subject to change without prior notice.

E & OE

**RUBBARIDE STUB AXLES WITHOUT BRAKES**

Stock Code	Capacity	Stud Fixing	Price Each
AR0550/0750L+R	550kg to 750kg (Pair)	4/61/100	R 1 335.00
AR0900/1150L+R	900kg to 1150kg (Pair)	Optional	R 2 650.00
AR1200/1600L+R	1200kg to 1600kg (Pair)	Optional	R 2 800.00
AR1300/1800L+R	1300kg to 1800kg (Pair)	Optional	R 2 860.00
AR2000/2500L+R	2000kg to 2500kg (Pair)	Optional	R 5 365.00
AR3000/3500L+R	3000kg to 3500kg (Pair)	6/160.8/205	R 7 065.00



**RUBBARIDE FULL BEAM AXLES WITHOUT BRAKES**

Stock Code	Capacity	Stud Fixing	Price Each
AR0550/0750-1	550kg to 750kg	4/61/100	R 2 670.00
AR0900/1150-1	900kg to 1150kg	Optional	R 5 305.00
AR1200/1600-1	1200kg to 1600kg	Optional	R 5 605.00
AR1300/1800-1	1300kg to 1800kg	Optional	R 5 725.00
AR2000/2500-1	2000kg to 2500kg	Optional	R 10 715.00
AR3000/3500-1	3000kg to 3500kg	6/160.8/205	R 14 130.00



When two axles are to be used in tandem, the order must state it.

Where two axles are used in tandem, the carrying capacity of the combination is reduced by 17%

Prices are exclusive of VAT and are subject to change without prior notice.

E & OE

**RUBBARIDE AXLES**  
 Up To 3500kg

**RUBBARIDE STUB AXLES WITH DRUM BRAKES (CABLE)**

Stock Code	Capacity	Stud Fixing	Brake Size	Brake Cap	Price Each
ARC0900/1150L+R	900kg to 1150kg (Pair)	Optional	200X50	1600kg	R 4 110.00
ARC1200/1600L+R	1200kg to 1600kg (Pair)	Optional	200X50	1600kg	R 4 230.00
ARC1300/1800L+R	1300kg to 1800kg (Pair)	Optional	250X40	1800kg	R 5 020.00
ARC2000/2500L+R	2000kg to 2500kg (Pair)	Optional	250X50	2500kg	R 7 830.00



**RUBBARIDE FULL BEAM AXLES WITH DRUM BRAKES (CABLE)**

Stock Code	Capacity	Stud Fixing	Brake Size	Brake Cap	Price Each
ARC0900/1150-1	900kg to 1150kg	Optional	200X50	1600kg	R 8 225.00
ARC1200/1600-1	1200kg to 1600kg	Optional	200X50	1600kg	R 8 470.00
ARC1300/1800-1	1300kg to 1800kg	Optional	250X40	1800kg	R 10 055.00
ARC2000/2500-1	2000kg to 2500kg	Optional	250X50	2500kg	R 15 665.00
ARC3000/3500-1	3000kg to 3500kg	6/160/205	305X80	3500kg	R 27 910.00



Price of full beam axle includes two steel brake cables, and the price of a stub axle includes one steel brake cable.

When two axles are to be used in tandem, the order must state it.

A BC01 compensator is to be used for axles in tandem, & BC02 compensator is to be used for a single axle.

Where two axles are used in tandem, the carrying capacity of the combination is reduced by 17%

**FULL BEAM AXLES WITHOUT BRAKES**

Stock Code	Load Capacity	Hub	Beam	H/H	Price Each
AF38A.H/H.01	900kg	4/61/100	□ 40mm	Up to 1400mm	R 1 430.00
AF38A.H/H.01	900kg	4/61/100	□ 40mm	1401mm to 1850mm	R 1 620.00
AF38A.H/H.01	900kg	4/61/100	□ 40mm	1851mm to 1950mm	R 1 700.00
AF38A.H/H.01	900kg	4/61/100	□ 40mm	1951mm to 2300mm	R 1 820.00
AF40A.H/H.01	900kg	4/61/100	∅ 40mm	Up to 1250mm	R 1 280.00
AF40A.H/H.01	900kg	4/61/100	∅ 40mm	1251mm to 1500mm	R 1 335.00
AF40A.H/H.01	900kg	4/61/100	∅ 40mm	1501mm to 1700mm	R 1 430.00
AF40A.H/H.01	900kg	4/61/100	∅ 40mm	1701mm to 1850mm	R 1 460.00
AF40A.H/H.01	900kg	4/61/100	∅ 40mm	1851mm to 2000mm	R 1 530.00
AF40A.H/H.01	900kg	4/61/100	∅ 40mm	2001mm to 2300mm	R 1 575.00
AF40A-1.H/H	900kg	Optional	∅ 40mm	Up to 1500mm	R 1 860.00
AF40A-1.H/H	900kg	Optional	∅ 40mm	1501mm to 1950mm	R 1 945.00
AF40A-1.H/H	900kg	Optional	∅ 40mm	1951mm to 2300mm	R 2 040.00
AF40C.H/H.01	750kg	4/61/100	∅ 40mm	Up to 1700mm	R 1 315.00
AF40C.H/H.01	750kg	4/61/100	∅ 40mm	1701mm to 2300mm	R 1 375.00
AF38A-1.H/H	1250kg	Optional	□ 40mm	Up to 1500mm	R 1 945.00
AF38A-1.H/H	1250kg	Optional	□ 40mm	1501mm to 1750mm	R 2 065.00
AF38A-1.H/H	1250kg	Optional	□ 40mm	1751mm to 1900mm	R 2 185.00
AF38A-1.H/H	1250kg	Optional	□ 40mm	1901mm to 2300mm	R 2 310.00
AF45A.H/H	1600kg	Optional	□ 45mm	Up to 1500mm	R 2 165.00
AF45A.H/H	1600kg	Optional	□ 45mm	1501mm to 1550mm	R 2 260.00
AF45A.H/H	1600kg	Optional	□ 45mm	1551mm to 1950mm	R 2 310.00
AF45A.H/H	1600kg	Optional	□ 45mm	1951mm to 2100mm	R 2 430.00
AF45A.H/H	1600kg	Optional	□ 45mm	2101mm to 2350mm	R 2 625.00



AF40A



AF45A

When two axles are to be used in tandem, the order must state it.

Where two axles are used in tandem, the carrying capacity of the combination is reduced by 17%

Prices are exclusive of VAT and are subject to change without prior notice.

E & OE

STANDARD HIGH SPEED AXLES  
Up To 3500kg

FULL BEAM AXLES WITHOUT BRAKES

Stock Code	Load Capacity	Hub	Beam	H/H	Price	Each
AF50C.H/H	1800kg	Optional	□ 50mm	Up to 1800mm	R 2 555.00	
AF50C.H/H	1800kg	Optional	□ 50mm	1801mm to 2100mm	R 2 810.00	
AF50C.H/H	1800kg	Optional	□ 50mm	2101mm to 2300mm	R 3 040.00	
AF50A.H/H	2500kg	Optional	□ 50mm	Up to 1800mm	R 2 915.00	
AF50A.H/H	2500kg	Optional	□ 50mm	1801mm to 2100mm	R 3 040.00	
AF50A.H/H	2500kg	Optional	□ 50mm	2101mm to 2300mm	R 3 110.00	
AF55A.H/H	3000kg	Optional	□ 55mm	Up to 1400mm	R 3 140.00	
AF55A.H/H	3000kg	Optional	□ 55mm	1401mm to 1700mm	R 3 260.00	
AF55A.H/H	3000kg	Optional	□ 55mm	1701mm to 2300mm	R 3 650.00	
AF60A.H/H.05	4000kg	6/160/205	□ 60mm	Up to 2100mm	R 4 865.00	
AF70A.H/H.05	6000kg	6/160.8/205	□ 70mm	Up to 2100mm	R 5 355.00	



When two axles are to be used in tandem, the order must state it.

Where two axles are used in tandem, the carrying capacity of the combination is reduced by 17%  
 Prices are exclusive of VAT and are subject to change without prior notice.

E & OE

**FULL BEAM AXLES WITH BRAKES (CABLE)**

Stock Code	Load Ca-	Hub	Beam	Brake	Brake	H/H	Price	Each
AFC40A-1.H/H	900kg	Optional	∅ 40mm	200x50	1600kg	Up to 2300mm	R 4 815.00	
AFC38A-1.H/H	1250kg	Optional	□ 40mm	200x50	1600kg	Up to 2300mm	R 5 175.00	
AFC45A.H/H	1600kg	Optional	□ 45mm	200x50	1600kg	Up to 1500mm	R 4 930.00	
AFC45A.H/H	1600kg	Optional	□ 45mm	200x50	1600kg	1501mm to 1700mm	R 5 055.00	
AFC45A.H/H	1600kg	Optional	□ 45mm	200x50	1600kg	1701mm to 1950mm	R 5 175.00	
AFC45A.H/H	1600kg	Optional	□ 45mm	200x50	1600kg	1951mm to 2100mm	R 5 280.00	
AFC45A.H/H	1600kg	Optional	□ 45mm	200x50	1600kg	2101mm to 2200mm	R 5 300.00	
AFC45A.H/H	1600kg	Optional	□ 45mm	200x50	1600kg	2201mm to 2360mm	R 5 420.00	
AFC50B.H/H	1800kg	Optional	□ 50mm	250x40	1800kg	Up to 1600mm	R 7 130.00	
AFC50B.H/H	1800kg	Optional	□ 50mm	250x40	1800kg	1601mm to 1900mm	R 7 250.00	
AFC50B.H/H	1800kg	Optional	□ 50mm	250x40	1800kg	1901mm to 2100mm	R 7 370.00	
AFC50B.H/H	1800kg	Optional	□ 50mm	250x40	1800kg	2101mm to 2300mm	R 7 740.00	
AFC50A.H/H	2500kg	Optional	□ 50mm	250x50	2500kg	Up to 2000mm	R 7 620.00	
AFC50A.H/H	2500kg	Optional	□ 50mm	250x50	2500kg	2001mm to 2300mm	R 8 225.00	
AFC55A.H/H	3000kg	Optional	□ 55mm	250x50	2500kg	Up to 2300mm	R 8 350.00	
AFC60A.H/H	3500kg	6/160.205	□ 60mm	305x80	3500kg	Up to 2100mm	R 18 645.00	



AFC45A



AFC50A

Price of full beam axle includes two steel brake cables.

When two axles are to be used in tandem, the order must state it.

A BC01 compensator is to be used for axles in tandem, & BC02 compensator is to be used for a single axle.

Where two braked axles are used in tandem, the carrying capacity of the combination is reduced by 17%

STANDARD HIGH SPEED AXLES  
Up To 3500kg

TRANSMISSION COMPONENTS

Stock Code	Description	Price Each
BC01	Equaliser bracket tandem	R 120.00
BC02	Equaliser bracket single	R 31.00
BCK1140	Brake cable 1140mm steel	R 155.00
BCK1440	Brake cable 1440mm steel	R 155.00
BCK1740	Brake cable 1740mm steel	R 155.00
BCK1140S	Brake cable 1140mm stainless steel	R 240.00
BCK1440S	Brake cable 1440mm stainless steel	R 240.00
BCK1740S	Brake cable 1740mm stainless steel	R 240.00
M10RB	M10 threaded rod <b>(3 meter lengths only)</b>	R 65.00
CHBL01	Hand brake lever	R 520.00







Kit	Components	Description	Qty	ID (mm)	OD (mm)	Grease	Application	Price
BKIT01	B30204	Bearing 30204	1	20.0	47.0	Ø47mm	Burquip: AF40A AF38A	R 135.00
	B30205	Bearing 30205	1	25.0	52.0			
	OS30-52-7	Seal 30-52-7	1	30.0	52.0			
	M3.2X36SP	Split Pin 3.2X36	1	-	-			
BKIT02	B30205	Bearing 30205	1	25.0	52.0	Ø52mm	Burquip: AF/AFC45A Pre-2010 AF/AFC40A-1 AF/AFC38A-1	R 155.00
	B30206	Bearing 30206	1	30.0	62.0			
	OS38-62-7	Seal 38-62-7	1	38.0	62.0			
	M3.2X36SP	Split Pin 3.2X36	1	-	-			
BKIT03	B30206	Bearing 30206	1	30.0	62.0	Ø62mm	Burquip: AF/AFC50A AF/AFC55A AFC50E	R 205.00
	B30208	Bearing 30208	1	40.0	80.0			
	OS48-80-10	Seal 48-80-10	1	48.0	80.0			
	M4X40SP	Split Pin 4X40	1	-	-			
BKIT04	B30205	Bearing 30205	1	25.0	52.0	Ø52mm	Burquip: AF/AFC45A Post-2010 AF50C AFC50B	R 170.00
	B32007	Bearing 32007	1	35.0	62.0			
	OS42-62-7	Seal 42-62-7	1	42.0	62.0			
	M3.2X36SP	Split Pin 3.2X36	1	-	-			
BKIT05	B44649\10	Bearing 44610/49	1	27.0	50.0	Ø50mm	Venter: 40mm Unbraked Axle 4/100 Rubax: Rheno Hub	R 165.00
	B67048\10	Bearing 67048/10	1	31.7	59.1			
	OS40-60-10	Seal 40-60-10	1	40.0	60.0			
	M4X40SP	Split Pin 4X40	1	-	-			
BKIT06	B44649\10	Bearing 44610/49	2	27.0	50.0	Ø50mm	Venter: 40mm Square Unbraked 4/100 Mini Hub	R 145.00
	OS38-52-7	Seal 38-52-7	1	38.0	52.0			
	M4X40SP	Split Pin 4X40	1	-	-			
BKIT07	B11749\10	Bearing 11749/10	1	17.0	40.0	Ø48mm	Trailco: 40mm Braked Axle 40mm Unbraked Axle	R 140.00
	B45449\10	Bearing 45449/10	1	29.0	50.3			
	OS38-52-7	Seal 38-52-7	1	38.0	52.0			
	M3.2X36SP	Split Pin 3.2X36	1	-	-			

(i) Grease cap is not included in bearing kit, and is sold separately. It is purely an indication of what grease cap would normally be used with the corresponding bearing kit.



Kit	Components	Description	Qty	ID (mm)	OD (mm)	Grease	Application	Price
BKIT08	B11949\10	Bearing 11949/10	1	19.0	45.2	Ø48mm	Trailco: 45mm Braked/Unbraked Axle 5/114.3 or 4/100	R 140.00
	B67048\10	Bearing 67048/10	1	31.7	59.1			
	OS42-62-7	Seal 42-62-7	1	42.0	62.0			
	M3.2X36SP	Split Pin 3.2X36	1	-	-			
BKIT09	B32005	Bearing 32005	1	25.0	47.0	Ø48mm	Trailco: 45mm Braked 6/139.7 50mm Round Unbraked 9" Braked Axle Short Nose	R 170.00
	B32007	Bearing 32007	1	35.0	62.0			
	OS42-62-7	Seal 42-62-7	1	42.0	62.0			
	M4X40SP	Split Pin 4X40	1	-	-			
BKIT10	B32006	Bearing 32006	1	30.0	55.0	Ø55mm	Trailco: 50mm Square Unbraked 9" Braked Axle Long Nose	R 200.00
	B32008	Bearing 32008	1	40.0	68.0			
	OS45-72-10	Seal 45-72-10	1	45.0	72.0			
	M3.2X36SP	Split Pin 3.2X36	1	-	-			
BKIT11	B44649\10	Bearing 44649/10	1	26.9	50.2	Ø50mm	Venter 45SQ	R 175.00
	B48548\10	Bearing 48548/10	1	34.9	65.0			
	OS50-65-8	Seal 50-65-8	1	50.0	65.0			
	M4X40SP	Split Pin 4X40	1	-	-			
BKIT12	B30208	Bearing 30208	1	40.0	80.0	Ø80mm	AF60A	R 300.00
	B30211	Bearing 30211	1	55.0	100.0			
	OS70-100-13	Seal 70-100-13	1	70.0	100.0			
	M5X70SP	Split Pin 5X70	1	-	-			
BKIT13	B30209	Bearing 30209	1	45.0	85.0	Ø85mm	AF70A	R 320.00
	B30212	Bearing 30212	1	60.0	110.0			
	OS68-110-13	Seal 68-110-13	1	68.0	110.0			
	M5X70SP	Split Pin 5X70	1	-	-			

(i) Grease cap is not included in bearing kit, and is sold separately. It is purely an indication of what grease cap would normally be used with the corresponding bearing kit.

**FULL BEAM AXLES WITHOUT BRAKES**

Stock Code	Load Capacity	Hub	Beam	H/H	Price Each
AF55A	3000kg	5/110/165.1	□ 55mm	1675mm	R 3 260.00
AF60A	4000kg	6/160/205	□ 60mm	1675mm	R 4 620.00
AF70A	6000kg	6/160.8/205	□ 70mm	1800mm	R 5 355.00
AF80C	8000kg	8/220/275	□ 80mm	1830mm	R 7 310.00
AF90C	10000kg	10/275/335	□ 90mm	1800mm	R 10 105.00
AF100C	14000kg	10/275/335	□ 100mm	1850mm	R 12 180.00
AF127C	17000kg	10/275/335	∅ 127mm	2050mm	R 12 180.00
AF150C	17000kg	10/275/335	□ 150mm	2200mm	R 23 880.00



**FULL BEAM AXLES WITH BRAKES (FLAT CAM)**

Stock Code	Load Capacity	Hub	Beam	H/H	Brake Size	Price Each
AFB70C	6000kg	6/160.8/205	□ 70mm	1700mm	300X60	R 8 280.00
AFB70C	6000kg	6/160.8/205	□ 70mm	1800mm	300X60	R 8 280.00
AFB80C	8000kg	8/220/275	□ 80mm	1830mm	350X60	R 12 790.00
AFB90C	10000kg	10/275/335	□ 90mm	1800mm	400X80	R 17 055.00
AFB100C	14000kg	10/275/335	□ 100mm	2050mm	400X80	R 19 005.00



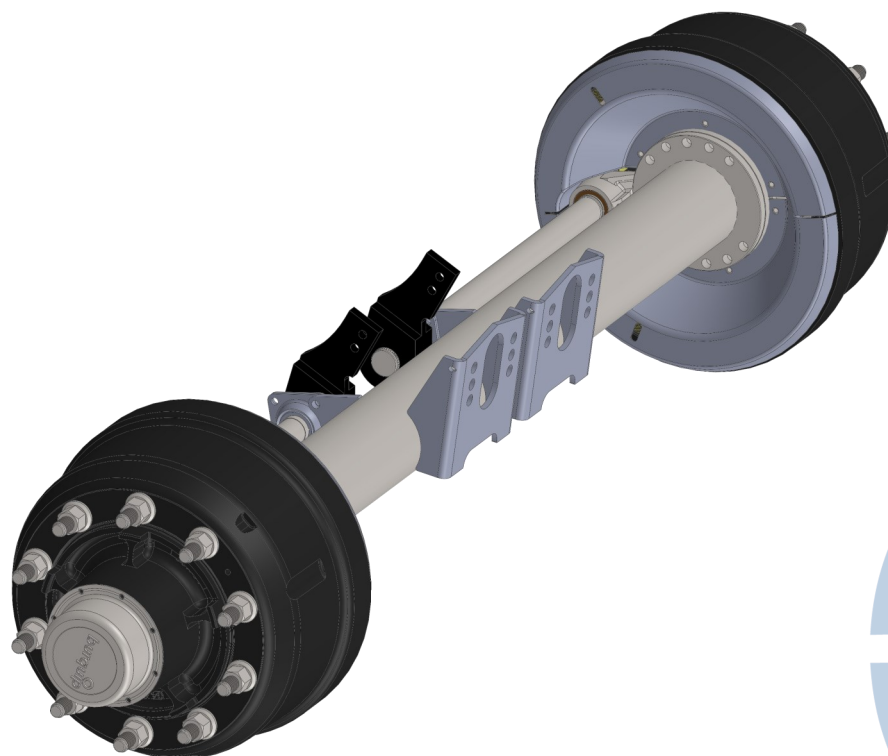
Prices are exclusive of VAT and are subject to change without prior notice.

E & OE

**FULL BEAM AXLES WITH BRAKES (S-CAM)**

Stock Code	Load	Hub	Beam	H/H	Brake	Price Each
AFB70AS6 Includes Manual Slack Adjusters	3500kg	6/160.8/205 Stud Mount	□ 70mm	1820mm Special On Request	310X80	R 13 355.00
AFB70AS6ABS Includes ABS, Automatic Slack Adjust-	3500kg	6/160.8/205 Stud Mount	□ 70mm	1820mm Special On	310X80	R 16 280.00
AFB80CS8ABS Includes ABS, Automatic Slack Adjusters	5000kg	8/220/275 Stud Mount	□ 80mm	1820mm	300X135	R 17 805.00
AFB80CS8ABS.2150 Includes ABS, Automatic Slack Adjusters	5000kg	8/220/275 Stud Mount	□ 80mm	2150mm	300X135	R 18 975.00
AFB127CS10.1920 Includes Automatic Slack Adjusters	13000kg	10/275/335 Spigot Mount*	∅ 127mm	1920mm	420X180	R 24 135.00
AFB127CS10ABS.1920 Includes ABS, Automatic Slack Adjusters	13000kg	10/275/335 Spigot Mount*	∅ 127mm	1920mm	420X180	R 24 600.00
AFB127CS10ABS.2130 Includes ABS, Automatic Slack Adjusters	13000kg	10/275/335 Spigot Mount*	∅ 127mm	2130mm	420X180	R 25 070.00

\* Stud mount available on request.



**OPTIONAL EXTRAS**

Stock Code	Description	Price Each
M22WS.122	Longer Studs For Aluminium Rim Fitment (20 Required Per Axle)	R 65.00

**HIGH SPEED TRAILER & CARAVAN WHEELS**

Stock Code	Type	Description	Stud Fixing	Off Set	Price	Each
W10-4.5B-01	4.5B X 10	White spoked (SDC)	4/67/100	-5mm	R 420.00	
W13-4.5J-01I	4.5J X 13	White spoked (SDC)	4/67/100	0mm	R 310.00	
W13-4.5J-02I	4.5J X 13	White spoked (SDC)	5/72.5/114.3	0mm	R 310.00	
W13-4.5J-01G	4.5J X 13	Galvanised spoked (SDC)	4/67/100	0mm	R 480.00	
W13-4.5J-01IS	4.5J X 13	Silver spoked (SDC)	4/67/100	0mm	R 310.00	
W14-6.0J-01I	6.0J X 14	White spoked (SDC)	4/67/100	14mm	R 460.00	
W14-6.0J-02I	6.0J X 14	White spoked (SDC)	5/83.5/114.3	14mm	R 460.00	
W14-6.0J-02G	6.0J X 14	Galvanised spoked (SDC)	5/83.5/114.3	14mm	R 625.00	
W14-6.0J-02IS	6.0J X 14	Silver spoked (SDC)	5/83.5/114.3	14mm	R 460.00	
W14-6.0J-04I	6.0J X 14	White spoked (SDC)	6/108.9/139.7	14mm	R 460.00	
W14-6.0J-04G	6.0J X 14	Galvanised spoked (SDC)	6/108.9/139.7	14mm	R 625.00	
W15-7.0J-02I	7.0J X 15	White spoked (SDC)	5/83.5/114.3	3mm	R 605.00	
W15-7.0J-04I	7.0J X 15	White spoked (SDC)	6/108.9/139.7	0mm	R 580.00	
W15-7.0J-04G	7.0J X 15	Galvanised spoked (SDC)	6/108.9/139.7	0mm	R 850.00	
W15-7.0J-04IB	7.0J X 15	Black spoked (SDC)	6/108.9/139.7	0mm	R 580.00	
W15-7.0J-04IS	7.0J X 15	Silver spoked (SDC)	6/108.9/139.7	0mm	R 580.00	
W16-7.0J-04I	7.0J X 16	White spoked (SDC)	6/108.9/139.7	5mm	R 850.00	
W16-7.0J-04IS	7.0J X 16	Silver spoked (SDC)	6/108.9/139.7	5mm	R 850.00	



W10-4.5B-01



W13-4.5J-01I



W13-4.5J-01IS



W14-6.0J-02I



W14-6.0J-04I



W15-7.0J-04IB

Prices are exclusive of VAT and are subject to change without prior notice.

E & OE

**HIGH SPEED TRAILER & CARAVAN WHEELS**

Stock Code	Type	Description	Stud Fixing	Off Set	Price	Each
W16-5.5B-03	5.5F X 16	Black solid (SDC)	5/110/165.1	0mm	R 765.00	
W16-6.0G-03C	6.0G X 16	2 piece (SDC)	5/110/165.1	0mm	R 1 010.00	
W16-6.0G-05DC	6.0G X 16	2 piece dual (SDC)	6/161/205	130mm	R 1 010.00	
W16-6.5H-05C	6.5HX16	2 piece (SDC)	6/161/205	0mm	R 1 090.00	
W16-7.0-05C	7.0 X 16	2 piece (Flatbase)	6/161/205	0mm	R 1 335.00	
W16-7.0-06C	7.0 X 16	2 piece (Flatbase)	8/221/275	0mm	R 1 335.00	
W17.5-6.75-05	6.75 X 17.5	SDC	6/161/205	0mm	On Request	
W17.5-6.75-06	6.75 X 17.5	SDC	8/221/275	0mm	On Request	
W17.5-6.75HC-06	6.75 X 17.5	Dual SDC	8/221/275	143mm	On Request	
W20-7.5V-05C	7.5V X 20	2 piece (Flatbase)	6/161/205	0mm	R 1 820.00	
W20-7.5V-06C	7.5V X 20	2 piece (Flatbase)	8/221/275	0mm	R 1 820.00	
W22.5-9.00-10	9.00 X 22.5	Spigot Mount Dual SDC	10/281/335	175mm	R 1 335.00	
W22.5-9.00-10T	9.00 X 22.5	Stud Mount Dual SDC	10/281/335	175mm	R 1 335.00	
W22.5-11.75-10	11.75 X 22.5	Super Single (SDC)	10/281/335	0mm	R 1 575.00	



Prices are exclusive of VAT and are subject to change without prior notice.

E & OE

RIM AND TYRE COMBOS



Stock Code	Tyre Size	Rim Description	Ply	Load	Overall ø	Stud Fixing
WT13-155-01	155/80 X 13	4.5J X 13 White	6	437kg	578mm	4/67/100
WT13-155-01G	155/80 X 13	4.5J X13 Galv.	6	437kg	578mm	4/67/100
WT13-155-02	155/80 X 13	4.5J X 13 White	6	437kg	578mm	5/72.5/114.3
WT14-195-01	195R14C	6.0J X 14 White	8	900kg	668mm	4/67/100
WT14-195-02	195R14C	6.0J X 14 White	8	900kg	668mm	5/83.5/114.3
WT14-195-02G	195R14C	6.0J X 14 White	8	900kg	668mm	5/83.5/114.3
WT14-195-04	195R14C	6.0J X 14 White	8	900kg	668mm	6/108.9/139.7
WT14-195-04G	195R14C	6.0J X 14 White	8	900kg	668mm	6/108.9/139.7
WT15-225-02	225/70R15C	7.0J X 15 White	8	1120kg	697mm	5/83.5/114.3
WT15-225-04G	225/70R15C	7.0J X 15 Galv.	8	1120kg	697mm	6/108.9/139.7
WT15-225-04	225/70R15C	7.0J X 15 White	8	1120kg	697mm	6/108.9/139.7
WT16-7.50-6.0G-03	7.50 X 16	6.0G X 16 Black 2 PC	12	1400kg	808mm	5/110/165.1

**Pricing available on request.**

Prices are exclusive of VAT and are subject to change without prior notice.

E & OE

**AGRICULTURAL TRACTOR & IMPLEMENT WHEELS**

Stock Code	Type	Description	Stud ing	Fix- ing	Off Set	Price	Each
W14-5.0J-03L	5.0J X 14	SDC	5/110/165.1		0		R 795.00
W15-6.0J-03L	6.0J X 15	SDC	5/110/165.1		0		R 1 010.00
W15-8.0W-03L	8.0W X 15	SDC	5/110/165.1		0		R 1 040.00
W15-8.0W-05L	8.0W X 15	SDC	6/161/205		0		R 1 040.00
W15.5-13.0-05L	13.0 X 15.5	SDC	6/161/205		0		R 2 675.00
W16-8.0W-05L	8.0W X 16	SDC	6/161/205		0		R 1 405.00
W18-9.0-05L	9.0X 18	SDC	6/161/205		0		R 1 215.00
W18-11.0-05L	11.0 X 18	SDC	6/161/205		0		R 2 310.00
W18-11.0-06L	11.0 X 18	SDC	8/221/275		0		R 2 430.00

WHEELS



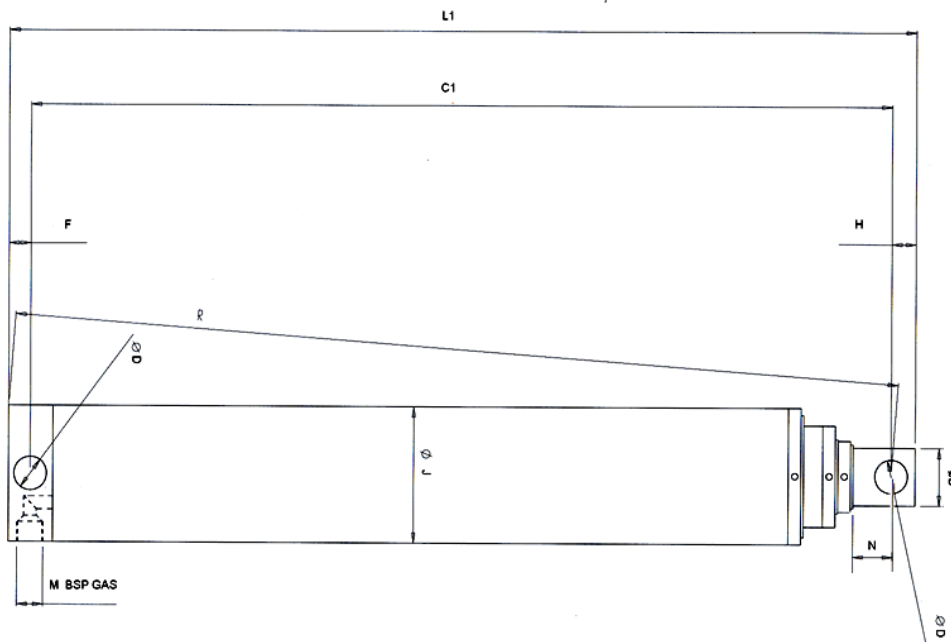
Prices are exclusive of VAT and are subject to change without prior notice.

E & OE



**BASE PIN MOUNTED CYLINDERS (TIPPING)**

Stock Code	Thrust (135)	Stages	Closed	Stroke	Pin Hole $\phi$	Barrel $\phi$	Price	Each
DW265	10/5	2	673mm	969mm	25.8mm	105mm	R 5 110.00	
DW345	10/5	2	876mm	1375mm	25.8mm	105mm	R 5 355.00	
DW365	10/7/4	3	924mm	1993mm	25.8mm	105mm	R 7 915.00	
DW626C	12/8	2 (Chromed)	775mm	1075mm	32.0mm	120mm	R 10 475.00	
DW385	12/8	2	914mm	1403mm	32.0mm	120mm	R 7 060.00	



Stock Code	Stages	Piston Diameters & Thrust at 135 Bar						Mass	Oil Vol	Seal Kit Code
		$\phi 60.30$ 3959kg	$\phi 69.85$ 5173kg	$\phi 76.20$ 6276kg	$\phi 88.90$ 8541kg	$\phi 95.25$ 9620kg	$\phi 107.95$ 12595kg			
DW265	2		•			•		24.5kg	4.5ℓ	DWSK265
DW345	2		•			•		31.0kg	7.6ℓ	DWSK265
DW365	3	•		•		•		38.0kg	9.8ℓ	DWSK365
DW626C	2				•		•	38.0kg	8.4ℓ	DWSK626
DW385	2				•		•	41.0kg	10.9ℓ	DWSK626

Grease Nipple 1/8" BSP

Stock Code	$\phi B$ (mm)	C1 (mm)	$\phi D$ (mm)	F (mm)	H (mm)	N (mm)	$\phi J$ (mm)	L1 (mm)	M BSP Gas	R (mm)
DW265	44.45	673	25.8	20	19	45	105	712	1/2"	695
DW345	44.45	876	25.8	20	19	45	105	915	1/2"	898
DW365	44.45	924	25.8	20	19	72	105	963	1/2"	946
DW626C	50.80	775	32.5	22	22	75	120	819	1/2"	800
DW385	50.8	914	32.5	22	22	50	120	958	1/2"	938

Prices are exclusive of VAT and are subject to change without prior notice.

E & OE

**CENTER TRUNNION MOUNTED CYLINDERS (TIPPING)**

Stock Code	Thrust (100 BAR)	Stages	Stroke	Trunnions
DD3032G	5000kg	3	700mm	DDT35
DD3044G	7000kg	4	1050mm	DDT40
DD3047G	7000kg	4	1510mm	DDT40
DD3055G	9000kg	5	2150mm	DDT45
DD4050G	12000kg	5	1900mm	DDT50
DD4052G	16000kg	5	2100mm	DDT50

Price	Each
R 6 090.00	
R 8 280.00	
R 9 260.00	
R 13 760.00	
R 18 275.00	
R 23 635.00	

Maximum Working Pressure: 180 Bar (2600PSI)

Prices include two trunnion brackets.

**GUARANTEE ONLY VALID IF CYLINDER IS USED WITH A CRADLE**



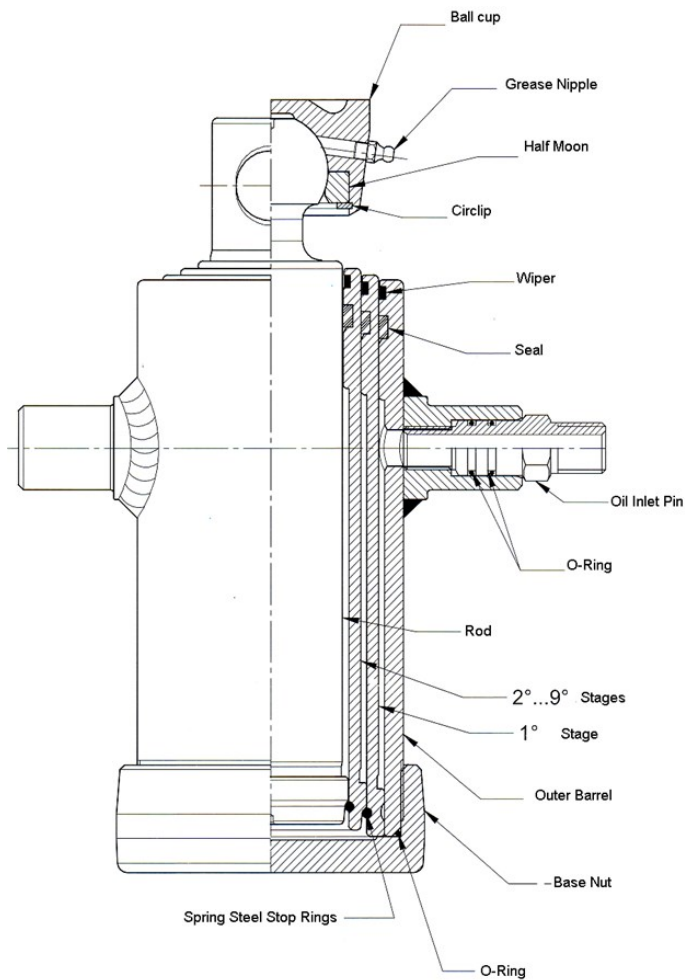
**CRADLES FOR CENTER TRUNNION MOUNTED CYLINDERS (TIPPING)**

Stock Code	SUPPORTED CYLINDERS						Trunnions
	DD3032	DD3044	DD3047	DD3055	DD4050	DD4052	
DCC2	•						DDT40
DCC3		•	•				DDT40
DCC4				•			DDT50
DCC5					•		DDT50
DCC6						•	DDT50

Price	Each
R 1 460.00	
R 1 820.00	
R 2 430.00	
R 4 620.00	
R 5 840.00	

Cradle prices do no include the trunnions.

**CENTER TRUNNION MOUNTED CYLINDERS (TIPPING)**



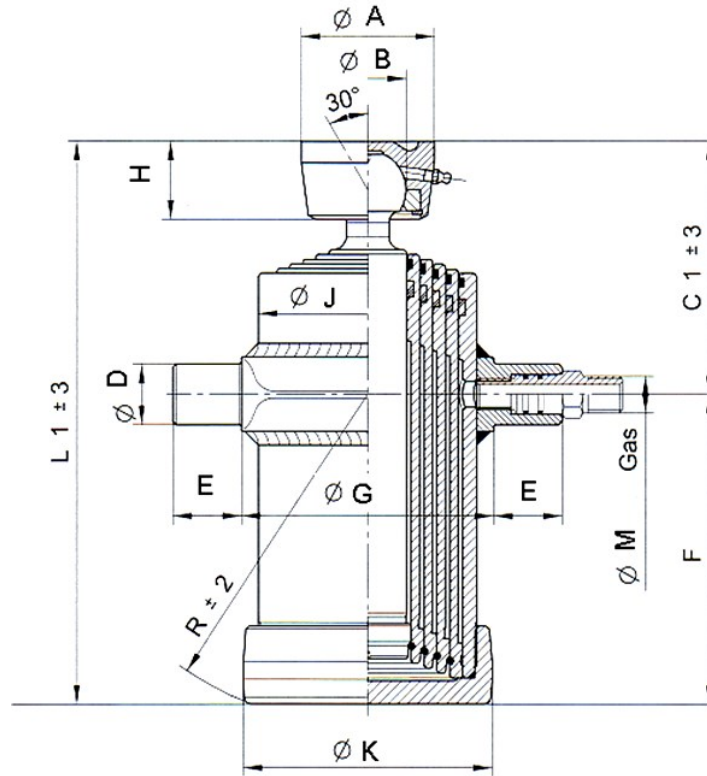
**Specifications**

Stock Code	Mass	Oil Vol.	Ball Joint Code	Hyd. Fitt. Code	Seal Kit Code	Cradle Code	Trunnion Code	Individual Stage Length
DD3032	26.0kg	3.3ℓ	DDBJ55	DDHF1/2	DDSK3032	DDC2	DDT35	300mm
DD3044	33.5kg	6.2ℓ	DDBJ55	DDHF1/2	DDSK3044/47	DDC3	DDT40	335mm
DD3047	43.0kg	8.8ℓ	DDBJ55	DDHF1/2	DDSK3044/47	DDC3	DDT40	450mm
DD3055	67.0kg	15.5ℓ	DDBJ55	DDHF1/2	DDSK3055	DDC4	DDT45	500mm
DD4050	81.5kg	18.2ℓ	DDBJ65	DDHF3/4	DDSK4050/51	DDC5	DDT50	450mm
DD4052	94.5kg	28.2ℓ	DDBJ65	DDHF3/4	DDSK4052	DDC6	DDT50	500mm

Prices are exclusive of VAT and are subject to change without prior notice.

E & OE

CENTER TRUNNION MOUNTED CYLINDERS (TIPPING)



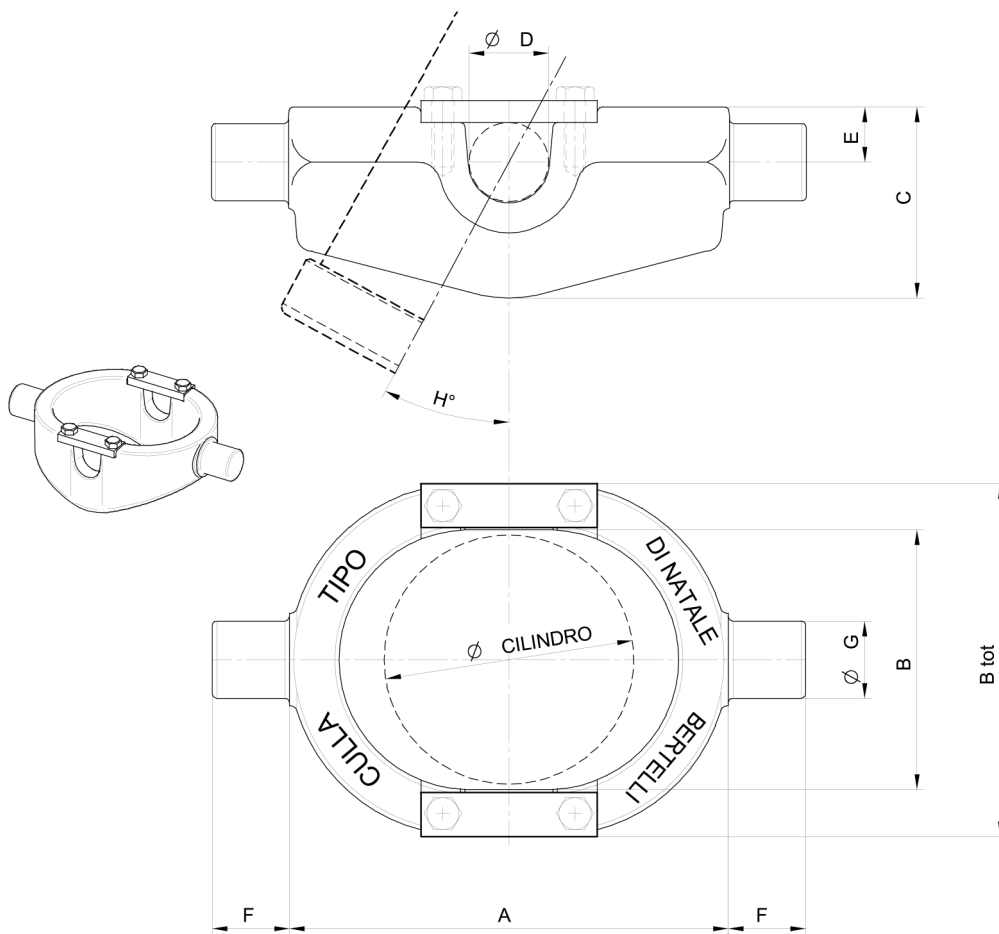
Stock Code	ØA (mm)	ØB (mm)	C1 (mm)	ØD (mm)	E (mm)	F (mm)	ØG (mm)	H (mm)	ØJ (mm)	ØK (mm)	L1 (mm)	M BSP GAS	R (mm)
DD3032	95	55	147	35	40	250	135	55	112	128	397	1/2"	260
DD3044	95	55	157	40	40	280	150	55	124	144	437	1/2"	290
DD3047	95	55	157	40	40	395	150	55	124	144	552	1/2"	405
DD3055	95	55	165	45	45	445	175	55	152	172	610	1/2"	455
DD4050	107	65	245	50	45	320	210	60	170	200	565	3/4"	335
DD4052	107	65	245	50	45	370	230	60	190	220	615	3/4"	390

Stock Code	Stages	Stroke	Piston Diameters (mm) & Thrust at 180 Bar										
			Ø61	Ø68	Ø76	Ø88	Ø91	Ø107	Ø126	Ø145	Ø165		
			5200kg	6500kg	8100kg	10900kg	11700kg	16100kg	22400kg	29700kg	38400kg		
DD3032	3	683mm	•		•		•						
DD3044	4	1050mm	•		•		•	•					
DD3047	4	1510mm	•		•		•	•					
DD3055	5	2130mm	•		•		•	•	•				
DD4050	5	1870mm		•		•		•	•	•			
DD4052	5	2100mm				•		•	•	•	•		•

Prices are exclusive of VAT and are subject to change without prior notice.

E & OE

CRADLES FOR CENTER TRUNNION MOUNTED CYLINDERS (TIPPING)



Stock Code	A (mm)	B (mm)	B tot (mm)	C (mm)	ØD (mm)	E (mm)	F (mm)	ØG (mm)	H	ØCil. (mm)	Load	Mass
DDC2	230	135	195	97	35	28	40	40	30°	112	10T	9.0kg
DDC3	230	155	215	107	40	31	40	40	30°	121	16T	10.5kg
DDC4	230	185	240	125	45	40	45	50	30°	150	20T	15.0kg
DDC5	330	215	290	165	50	45	55	50	30°	170	22T	22.0kg
DDC6	390	235	310	205	50	65	55	50	30°	190	23T	29.0kg

Prices are exclusive of VAT and are subject to change without prior notice.

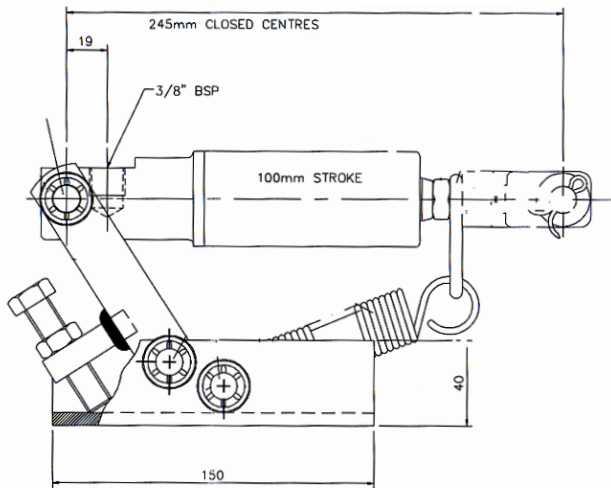
E & OE

**BRAKE CYLINDER KIT**

Stock Code	Description
DW366	Hydraulic brake cylinder for axle braking—low speed

Price Each
R 1 165.00

The cylinder should be parallel  $\pm 5^\circ$  to the base plate when connected to the brake lever of the axle in order to achieve the correct spring preload.



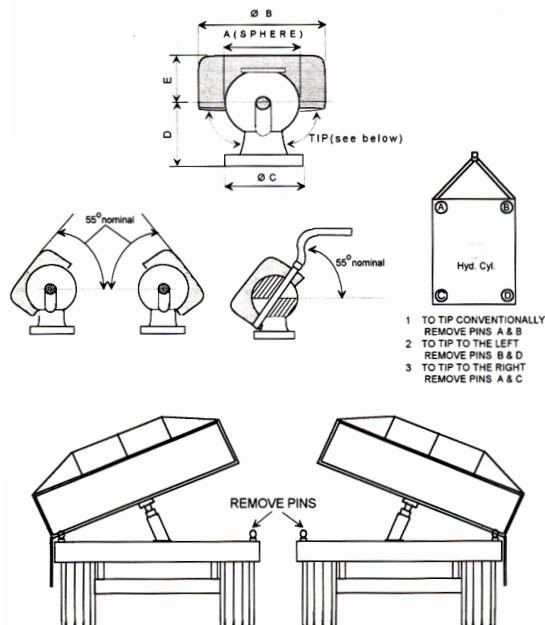
DW366

**BALL & SOCKET TIPPING JOINT**

Stock Code	Max Load	ØA (mm)	ØB (mm)	ØC (mm)	D (mm)	E (mm)	Tipping Angle
DTBS01	5000kg	77.5	104	66	69	45	55° (nominal)

Price Each
R 795.00

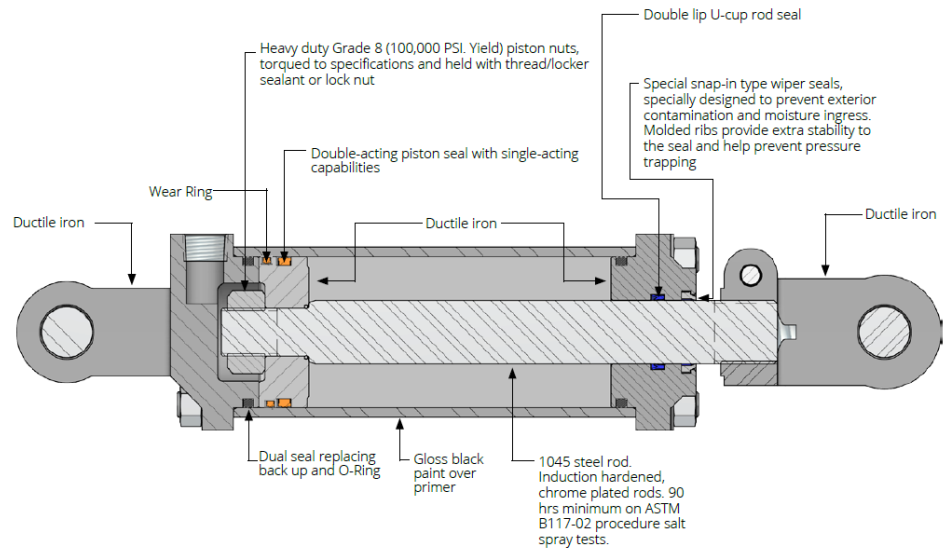
ADD ANOTHER TWO DIMENSIONS TO TIPPING



Prices are exclusive of VAT and are subject to change without prior notice.

E & OE

TIE-ROD CYLINDERS



SEAL TEMPERATURE RANGE: -30°C / +100°C (-22°F / +212°F)  
 SEAL MAXIMUM SPEED: 3 FT / SEC

All seals are top grade/first quality North American made  
 Quality controlled by LD cylinder engineers team, 100% testing before shipping  
 All components are CNC machined for higher accuracy and conformity, according to ISO9001 standard  
 All cylinders are submitted to static and dynamic pressure tests to recommended specifications

Stock Code	Bore (mm)	Stroke (mm)	Load (kg)	Pressure (PSI)
DC2-2008-ASAE-TR	50	205	3560	3000
DC2-2010TR	50	255	3560	3000
DC2-2018TR	50	455	3560	3000
DC2-3006TR	76	155	8015	3000
DC2-3008-ASAE-TR	76	205	8015	3000
DC2-3010TR	76	255	8015	3000
DC2-3012TR	76	305	8015	3000
DC2-3014TR	76	355	8015	3000
DC2-3016TR	76	405	8015	3000
DC2-3018TR	76	455	5750	3000
DC2-3020TR	76	510	4890	3000
DC2-3024TR	76	610	3650	3000
DC2-3030TR	76	765	6000	3000
DC2-3036TR	76	915	3730	3000
DC2-4010TR	101	255	14250	3000

Prices are exclusive of VAT and are subject to change without prior notice.

E & OE



Stock Code	Description
DC2-2008-ASAE-TR	TIEROD CYLINDER - 2008-ASAE-TR
DC2-2010TR	TIEROD CYLINDER - 2010TR
DC2-2018TR	TIEROD CYLINDER - 2018TR
DC2-3006TR	TIEROD CYLINDER - 3006TR
DC2-3008-ASAE-TR	TIEROD CYLINDER - 3008-ASAE-TR
DC2-3010TR	TIEROD CYLINDER - 3010TR
DC2-3012TR	TIEROD CYLINDER - 3012TR
DC2-3014TR	TIEROD CYLINDER - 3014TR
DC2-3016TR	TIEROD CYLINDER - 3016TR
DC2-3018TR	TIEROD CYLINDER - 3018TR
DC2-3020TR	TIEROD CYLINDER - 3020TR
DC2-3024TR	TIEROD CYLINDER - 3024TR
DC2-3030TR	TIEROD CYLINDER - 3030TR
DC2-3036TR	TIEROD CYLINDER - 3036TR
DC2-4010TR	TIEROD CYLINDER - 4010TR

Price Each
R 980.00
R 1 010.00
R 1 190.00
R 1 190.00
R 1 270.00
R 1 080.00
R 1 360.00
R 1 420.00
R 1 480.00
R 1 565.00
R 1 620.00
R 1 740.00
R 2 060.00
R 2 260.00
R 1 895.00



TIE-ROD CYLINDERS

Prices are exclusive of VAT and are subject to change without prior notice.

E & OE

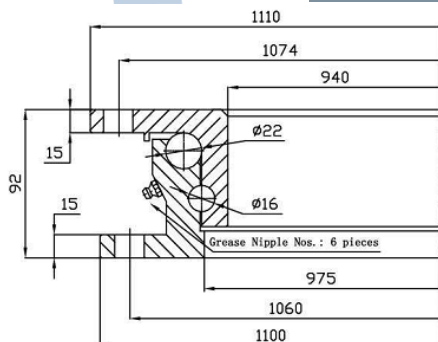
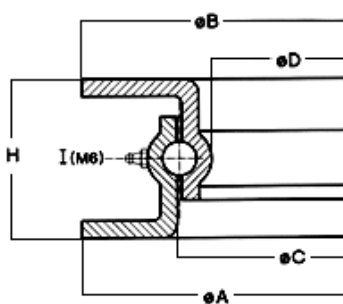




Stock Code	Max Load	Speed Rating	Outside $\phi$	Inner $\phi$	Height	Price	Each
TL1-0400	400kg	Up to 25km/h	400mm	300mm	50mm	R 1 945.00	
TL1-0650	1100kg	Up to 40km/h	650mm	550mm	55mm	R 2 430.00	
TL2-0900	3500kg	Up to 40km/h	900mm	780mm	65mm	R 3 405.00	
TL2-1050	5000kg	Up to 40km/h	1050mm	925mm	70mm	R 3 650.00	
TL3-1100	6500kg	Up to 40km/h	1100mm	970mm	80mm	R 4 010.00	
TL5-1100	10000kg	Up to 40km/h	1100mm	950mm	90mm	R 6 090.00	
TL6-1100DT	20000kg	Up to 105km/h	1100mm	940mm	92mm	R 7 310.00	

TURNTABLES

Stock Code	$\phi A$ (mm)	$\phi B$ (mm)	$\phi C$ (mm)	$\phi D$ (mm)	H (mm)	Ball $\phi$ (mm)	Min No. Mounting Value	Mounting Bolt Grade 8.8 (min)
TL1-0400	400	400	325	300	50	12.7	4	M12
TL1-0650	650	650	580	550	55	12.7	6	M12 or 14
TL2-0900	900	900	805	780	70	12.7	6	M14 or 16
TL2-1050	1050	1050	956	925	70	14	6	M14 or 16
TL3-1100	1100	1100	1000	970	80	16	8	M14 or 16
TL5-1100	1100	1100	985	950	90	22	8	M14 or 16



**TL6-1100DT**

Prices are exclusive of VAT and are subject to change without prior notice.

E & OE

**COMPLETE PTO'S - 2S**

Stock Code	Description
PTO-T2S-YS-01B-01B.1000	T2 PTO SHAFT 01B-01B 1000MM

Price Each
R 850.00

**COMPLETE PTO'S - 4S**

Stock Code	Description
PTO-T4S-YS-01B-01B.1000	T4 PTO SHAFT 01B-01B 1000MM
PTO-T4S-YS-01B-01B.1200	T4 PTO SHAFT 01B-01B 1200MM
PTO-T4S-YS-01B-01B.1500	T4 PTO SHAFT 01B-01B 1500MM
PTO-T4S-YS-01B-FFV1.1000	T4 PTO SHAFT 01B-FFV1 1000MM
PTO-T4S-YS-01B-FFV1.1200	T4 PTO SHAFT 01B-FFV1 1200MM
PTO-T4S-YS-01B-FFV1.1500	T4 PTO SHAFT 01B-FFV1 1500MM

Price Each
R 1 025.00
R 1 105.00
R 1 220.00
R 1 740.00
R 1 825.00
R 1 950.00



**COMPLETE PTO'S - 6S**

Stock Code	Description
PTO-T6S-YS-01B-01B.1000	T6 PTO SHAFT 01B-01B 1000MM
PTO-T6S-YS-01B-01B.1200	T6 PTO SHAFT 01B-01B 1200MM
PTO-T6S-YS-01B-01B.1500	T6 PTO SHAFT 01B-01B 1500MM
PTO-T6S-YS-01B-FFV2.1000	T6 PTO SHAFT 01B-FFV2 1000MM
PTO-T6S-YS-01B-FFV2.1200	T6 PTO SHAFT 01B-FFV2 1200MM
PTO-T6S-YS-01B-FFV2.1500	T6 PTO SHAFT 01B-FFV2 1500MM

Price Each
R 1 365.00
R 1 475.00
R 1 635.00
R 2 225.00
R 2 290.00
R 2 455.00

PTO'S (Spares) - 4S

Stock Code	Description	Price Each
PTOTP55X8	TENSION PIN 55X8 S4 I/TUBE	R 2.00
PTOTP60X8	TENSION PIN 60X8 S4 O/TUBE	R 2.00
PTO4S-S-B47	S4 IN/SHIELD BEARING	R 10.00
PTO4S-S-B54	S4 OUT/SHIELD BEARING	R 10.00
PTO4S-S-YS-INCONC-FFV	S4 INNER SHIELD CONE YS FOR FFV	R 39.00
PTO4S-S-YS-INCONC	S4 INNER SHIELD CONE YS	R 39.00
PTO4S-S-YS-OUTCONC	S4 OUTER SHIELD CONE YS	R 39.00
PTO4S.01	CROSS JOURNAL 74.6X27 S4	R 65.00
PTO4S.07	T4 I/TUBE YOLK 92X36.1	R 85.00
PTO4S.0501B	S4 SPLINED QR YOLK 108	R 125.00
PTO4S.SB	S4 SHEAR BOLT CLUTCH 1480 Nm	R 310.00
PTO4S.RA1	S4 OVERRUN CLUTCH 2400 Nm	R 395.00



Prices are exclusive of VAT and are subject to change without prior notice.

E & OE

PTO'S (Spares) - 6S

Stock Code	Description	Price Each
PTOTP70X10	TENSION PIN 70X10 S6 I/TUBE	R 10.00
PTOTP80X10	TENSION PIN 80X10 S6 O/TUBE	R 11.00
PTO6S-S-B59.5	S6 IN/SHIELD BEARING	R 12.00
PTO6S-S-B68.5	S6 OUT/SHIELD BEARING	R 12.00
PTO6S.FFV2.006	CLUTCH 6S-BUSHING	R 19.00
PTO6S.FFV2.003	CLUTCH 6S- FRICTION PLATE	R 23.00
PTO6S.FFV2.002	CLUTCH 6S- INTERNAL DISC	R 42.00
PTO6S.FFV2.001	CLUTCH 6S- PRESSURE PLATE	R 48.00
PTO6S-S-YS-INCONC	S6 INNER SHIELD CONE CAT III	R 50.00
PTO6S-S-YS-OUTCONC	S6 OUTER SHIELD CONE CAT III	R 50.00
PTO6S-S-YS-INCONC-FFV	S6 INNER SHIELD CONE YS FOR FFV	R 60.00
PTO6S.05A35	S6 PLAIN BORE YOLK - 35 / 13MM PIN HOLE	R 150.00
PTO6S.FFV2.004	CLUTCH 6S- HUB	R 205.00
PTO6S.SB	S6 SHEAR BOLT CLUTCH 2100 Nm	R 395.00
PTO6S.FFV2	S6 FRICTION CLUTCH 2 DISC 1200 Nm	R 940.00
PTO6SWA.0513B	S6 WIDE ANGLE JOINT CPTE	R 1 660.00



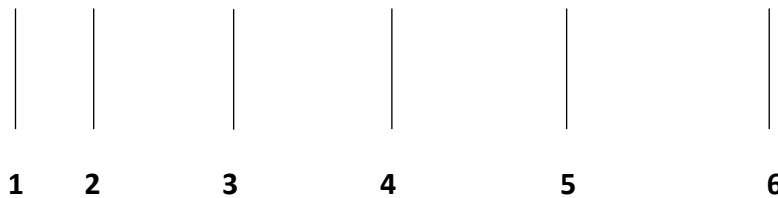
Prices are exclusive of VAT and are subject to change without prior notice.

E & OE

**PTO-T4S-YS-01B-01B.1000**



**PTO - T 4S - YS - 01B - 01B . 1000**



1. The type of tube used (T = Triangular)
2. The series of cross kits used
3. Shield Type (Yellow Shield)
4. The end number of the tractor end yoke
5. The end number of the implement end yoke/torque limiter
6. The length in millimetres.

Stock Code	Capacity	Type	Head	Body Type	Price Each
CBK2000C	1100 to 2000kg	Braked	50mm Ball	Delta	R 3 040.00
CBK2000E	1100 to 2000kg	Braked	50mm Ball	Delta - Short Lever	R 3 285.00
CBK2000BM	1100 to 2000kg	Braked	50mm Ball	Mono - 80X80	R 4 260.00
CBK2000D	1100 to 2000kg	Braked	40mm Din eye	Delta	R 4 380.00
CBK2700B	1600 to 2700kg	Braked	50mm Ball	Delta	R 4 380.00
CBK2700D	1600 to 2700kg	Braked	40mm Din eye	Delta	R 5 110.00
CBK3000B	2000 to 3000kg	Braked	50mm Ball	Delta	R 5 475.00
CBK3000BM	2000 to 3000kg	Braked	50mm Ball	Mono - 100X100	R 5 960.00
CBK3000BM1	2000 to 3000kg	Braked	50mm Ball	Mono - 80X80	R 6 090.00
CBK3500B	2700 to 3500kg	Braked	50mm Ball	Delta	R 7 310.00
CBK3500D	2700 to 3500kg	Braked	40mm Din eye	Delta	R 8 040.00
CUK0750	750kg	Un-Braked	50mm Ball	Straight	R 310.00
CUK2700	2700kg	Un-Braked	50mm Ball	Straight	R 310.00
C01132	6000kg Low Speed	Un-Braked	35mm Eye	Tow Eye	R 1 070.00
C07926	6000kg Low Speed	Un-Braked	52mm Eye	Tow Eye	R 1 070.00

All braked couplers above are only to be used with auto-reverse brakes.



Prices are exclusive of VAT and are subject to change without prior notice.

E & OE

**JOCKEY WHEELS**

Stock Code	Description	Max Load	Stroke	Shaft $\phi$	Wheel
JCB42/5.5S	Jockey wheel	-	200mm	42mm	5.5" Steel Single
JCB48/8S	Jockey wheel	150kg	200mm	48mm	8" Steel Single
JCB60/8S	Jockey wheel	300kg	200mm	60mm	8" Steel Single
JCB60/8D	Jockey wheel	300kg	200mm	60mm	8" Steel Double
JCC42	Pressed Clamp	-	-	42mm	-
JCC48	Pressed Clamp	-	-	48mm	-
JCB48	Cast Clamp	-	-	48mm	-
JCC60	Pressed Clamp	-	-	60mm	-
JC48/P700	Prop Stand	150kg	-	48mm	Flat Plate

Price Each
R 360.00
R 400.00
R 640.00
R 765.00
R 65.00
R 105.00
R 120.00
R 130.00
R 140.00





Stock Code	Out. Tube	Inner Tube	Stroke	Mass	Load	Total Length
J0013	∅ 48mm	∅ 42mm	195mm	3.0kg	150kg	500mm
J0007	□ 60mm	□ 50mm	255mm	6.0kg	600kg	590mm
J0005	□ 60mm	□ 50mm	350mm	7.0kg	800kg	565mm
J0012	∅ 57mm	∅ 50mm	350mm	5.6kg	900kg	540mm
J0017	∅ 51mm	∅ 45mm	250mm	5.6kg	900kg	430mm
J0010	□ 80mm	□ 70mm	300mm	13.0kg	1200kg	670mm
J0018	∅ 57mm	∅ 50mm	370mm	6.5kg	1300kg	560mm
J0006	□ 70mm	□ 60mm	350mm	8.4kg	1500kg	565mm
J0009	□ 70mm	□ 60mm & □ 50mm	710mm	12.5kg	1500kg	595mm
J0014	□ 80mm	□ 70mm & □ 60mm	576mm	21.0kg	2500kg	685mm
J0008	□ 70mm	□ 60mm	300mm	12.6kg	3000kg	620mm
J0015	□ 70mm	□ 60mm	200mm	16.5kg	4000kg	485mm
J0016	□ 70mm	□ 60mm	170mm	13.8kg	6000kg	460mm
J0021	Bush for J0017 and J0018 parking stand					

Price Each
R 310.00
R 850.00
R 825.00
R 725.00
R 850.00
R 920.00
R 965.00
R 965.00
R 1 460.00
R 1 925.00
R 1 335.00
R 2 185.00
R 1 925.00
R 95.00

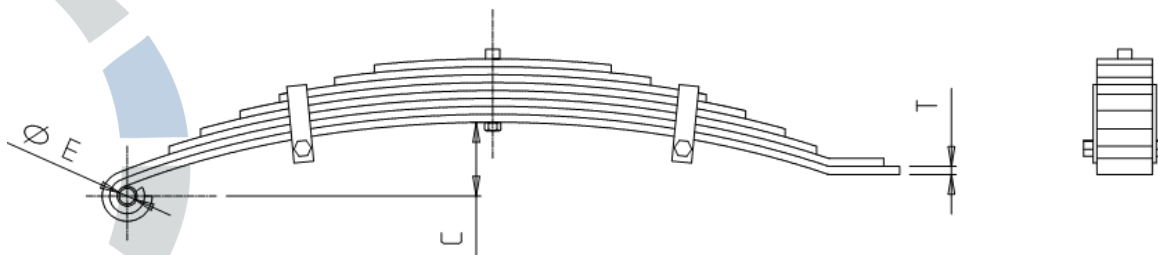
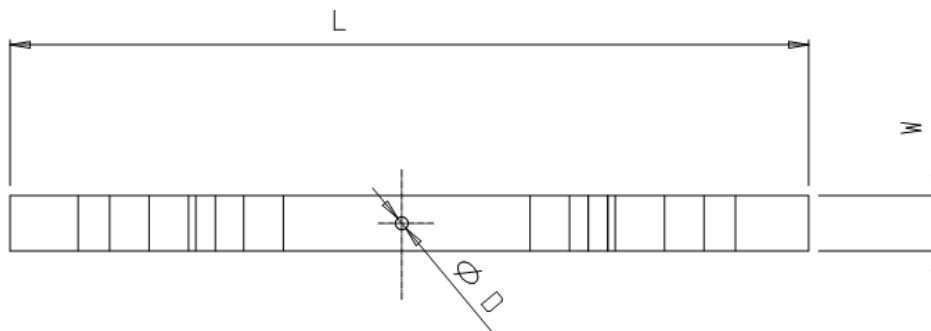
Prices are exclusive of VAT and are subject to change without prior notice.

E & OE



**LEAF SPRINGS**

Stock Code	No. Of Blades	C (mm)	ØD (mm)	ØE (mm)	L (mm)	T (mm)	W (mm)	Max Load/Pair	Rate (kg/mm)	Price Each
S03/27	3	80	12.5	12.5	685	6	44.5	560kg	3.44	R 225.00
S04/27	4	80	12.5	12.5	685	6	44.5	750kg	4.688	R 280.00
S05/27	5	80	12.5	12.5	685	6	44.5	950kg	5.936	R 310.00
S06/27	6	80	12.5	12.5	685	6	44.5	1150kg	7.188	R 360.00
S07/27	7	80	12.5	12.5	685	6	44.5	1350kg	8.438	R 400.00
S08/27	8	80	12.5	12.5	685	6	44.5	1500kg	9.725	R 410.00
S10/27	10	80	12.5	12.5	685	6	44.5	1800kg	11.25	R 460.00
S08/36	8	80	12.5	12.5	1020	8	50	2000kg	12.5	R 945.00
S10/36	10	80	12.5	12.5	1020	8	50	2500kg	15.625	R 1 070.00
S05/40	5	95	16	20	1100	10	70	3000kg	15.79	R 1 165.00
S08/40	8	95	16	20	1100	10	70	4000kg	21.053	R 1 820.00
S12/40	12	95	16	20	1100	10	70	6000kg	31.579	R 1 925.00
S13/40	13	95	16	20	1100	10	70	8000kg	42.105	R 2 010.00



**SPRING KITS**

Stock Code	No. Of	Max	Length	Blade Size (mm)	Supported Axle	Price Each
SKIT3000	5	3000kg	1100mm	70 X 10	□ 55	R 1 575.00
SKIT4000	8	4000kg	1100mm	70 X 10	□ 60	R 2 065.00
SKIT6000	12	6000kg	1100mm	70 X 10	□ 70	R 2 410.00
SKIT8000	13	8000kg	1100mm	70 X 10	□ 80	R 2 430.00

The above kits include one spring and mounting kit for one spring.

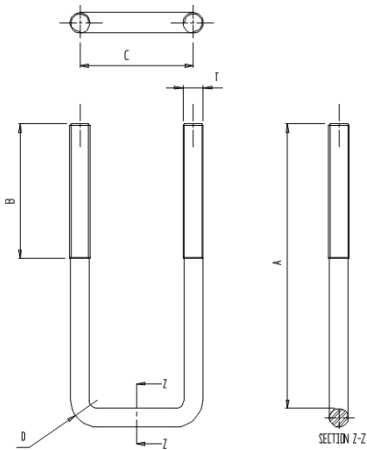


SUSPENSIONS

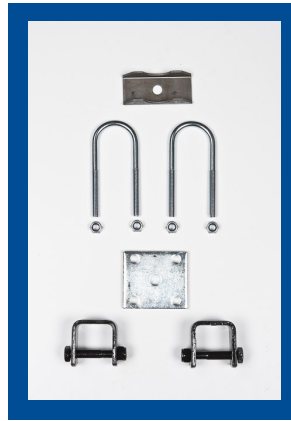
**SPRING MOUNTING KITS**

Stock Code	Supported	Spring	U-Bolts	Plate	Hanger Set
TC40R44.5G	∅ 40mm	44.5mm	SU40R	S5HP40	SH45
TC40S44.5G	□ 40mm	44.5mm	SU40S	S5HP40	SH45
TC45S44.5G	□ 45mm	44.5mm	SU45S	S5HP45	SH45
TC50S50G	□ 50mm	50.0mm	SU50S	S5HP50	SH50

Price Each
R 130.00
R 110.00
R 135.00
R 155.00



NOTES:  
 i ROLLED THREADS  
 ii U BOLTS TO BE ELECTRO GALVANISED



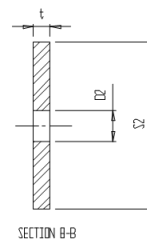
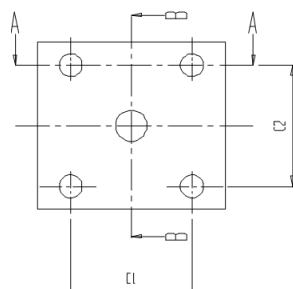
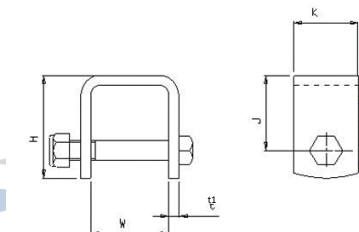
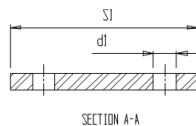
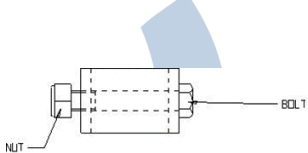
**Spring Mounting Kit**

**Components**

- 1X 5 hole plate
- 2X U-bolts & nuts
- 1X Hanger Bracket
- 1X Slipper Bracket
- 1X Saddle\*

\*TC40R44.5G only

Stock Code	U-Bolt (mm)					Plate (mm)								Hanger (mm)						
	A	B	C	D	T	Radius	C1	C2	d1	D2	S1	S2	t	Bolt	Nut	H	J	K	t1	W
TC40R44.5G	131	68	58		M10	24.5	58	58	11	15	90	80	8	M12X75G	M12NY	63	46	40	6	48
TC40S44.5G	116	58	58	5	M10		58	58	11	15	90	80	8	M12X75G	M12NY	63	46	40	6	48
TC45S44.5G	128	50	61	5	M12		61	61	13	15	90	90	10	M12X75G	M12NY	63	46	40	6	48
TC50S50G	169	80	67	5	M16		67	67	13	16	100	100	10	M12X90G	M12NY	75	58	40	6	55
SKIT3000	150	55	77	5	M16		92	77	18	25	125	120	10	M20X120G	M20NY	80	56	90	6	75
SKIT4000	185	55	82	5	M16		92	82	18	25	125	125	10	M20X120G	M20NY	80	56	90	6	75
SKIT6000	240	55	92	5	M16		97	92	18	25	140	140	10	M20X120G	M20NY	80	56	90	6	75
SKIT8000	270	55	102	5	M16		102	92	18	25	140	140	10	M20X120G	M20NY	80	56	90	6	75



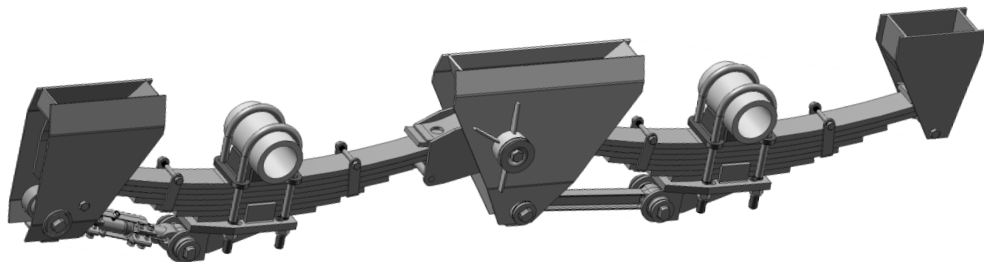
NOTES:  
 i PLATES TO BE ELECTRO GALVANISED

Prices are exclusive of VAT and are subject to change without prior notice.

E & OE

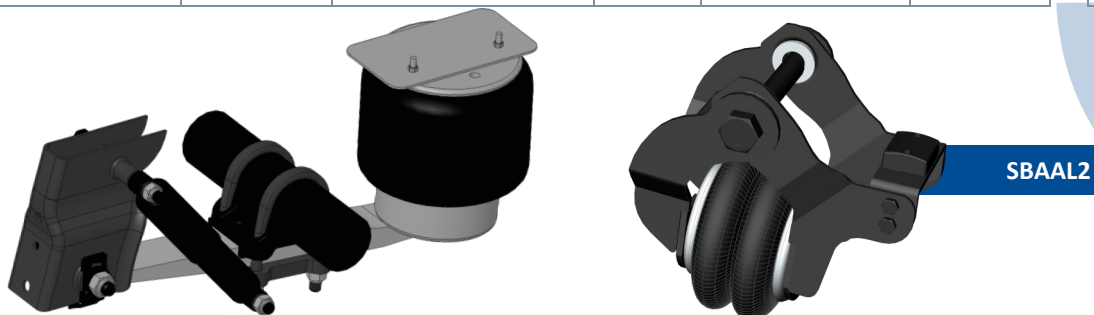
**MECHANICAL SPRING KITS 3500kg - 36000kg**

Stock Code	No. Of	Max	Orientation	Blade Size (mm)	Supported Axle	Price Each
SKIT3500-1	7	3500kg	Overslung Single	70 X 10	□ 70	R 5 500.00
SKIT3500-2	7	7000kg	Overslung Tandem	70 X 10	□ 70	R 11 710.00
SKIT5000-1	6	5000kg	Overslung Single	76 X 10	□ 80	R 6 320.00
SKIT5000-2	6	10000kg	Overslung Tandem	76 X 10	□ 80	R 15 810.00
SKIT9000O-1	7	9000kg	Overslung Single	76 X 16	∅ 127mm	R 12 180.00
SKIT9000O-2	7	18000kg	Overslung Tandem	76 X 16	∅ 127mm	R 24 365.00
SKIT9000O-3	7	27000kg	Overslung Tridem	76 X 16	∅ 127mm	R 36 555.00
SKIT9000U-1	7	9000kg	Underslung Single	76 X 16	∅ 127mm	R 11 480.00
SKIT9000U-2	7	18000kg	Underslung Tandem	76 X 16	∅ 127mm	R 24 365.00
SKIT9000U-3	7	27000kg	Underslung Tridem	76 X 16	∅ 127mm	R 36 555.00
SKIT9000U-4	7	36000kg	Underslung Quadrem	76 X 16	∅ 127mm	R 49 975.00



**AIR SUSPENSIONS 9000kg**

Stock Code	Orientation	Details	Max Load	Ride Height	Supported Axle	Price Each
SBAU220-260	Underslung	Fabricated Hanger, 1X 50mm Trailing Arm, 360mm Airbag	9000kg	220mm - 260mm	∅ 127mm	R 18 890.00
SBAU250-290	Underslung		9000kg	250mm - 290mm	∅ 127mm	R 18 890.00
SBAO340-380	Overslung		9000kg	340mm - 380mm	∅ 127mm	R 18 890.00
SBAO380-420	Overslung		9000kg	380mm - 420mm	∅ 127mm	R 18 890.00
SBAO410-450	Overslung		9000kg	410mm - 450mm	∅ 127mm	R 18 890.00
SBAO440-480	Overslung		9000kg	440mm - 480mm	∅ 127mm	R 18 890.00
SBAAL2	-	Two sided axle lift	-	-	-	R 4 560.00

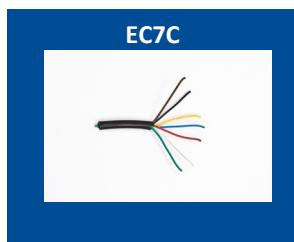
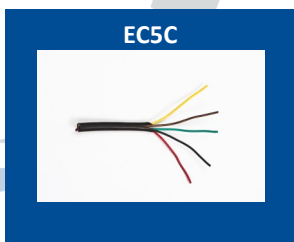


Prices are exclusive of VAT and are subject to change without prior notice.

E & OE

Stock Code	Description
ELKOM	Light kombi
EL08	Light kombi square
EL08LED	Light kombi square LED
EL02AS	Tail lamp semi-sealed - amber 12 volt
EL02RS	Tail lamp semi-sealed - red 12 volt
EL03AG	Tail lamp sealed - amber 12 volt
EL03RG	Tail lamp sealed - red 12 volt
ELEDC	LED Superseal - combination
ELEDC2	LED Trucklamp - combination
LB01P	Light box (double lens)
LB03P	Light box (single lens)
ELN12	Number plate light 12 volt
ELN12LED	Number plate light - LED
E7PMPC	7 Pin male plug
E7PFMPC	7 Pin female plug
EC5C	5 core 0.75 cable (price per meter)
EC7C	7 core 0.75 cable (price per meter)

Price Each
R 70.00
R 36.00
R 175.00
R 36.00
R 36.00
R 80.00
R 80.00
R 365.00
R 330.00
R 65.00
R 36.00
R 36.00
R 85.00
R 49.00
R 55.00
R 17.50
R 24.00



Prices are exclusive of VAT and are subject to change without prior notice.

E & OE

Stock Code	Description
EADRT	Avery reflective tape
E7PH	7 Pin male plug holder
EREFA	Reflector amber
EREFC	Reflector clear
EREFR	Reflector red
ERETR150	Reflector red triangle 150mm
CV1200	Chevron 1200mm
CV1400	Chevron 1400mm
CV1600	Chevron 1600mm
CV1700	Chevron 1700mm
HW1760K	Hand winch 800kg double gear
HW2500	Hand winch 1135kg
Z001	Toggle catch & hook
Z002	Heavy duty toggle latch
Z003	Heavy duty striker
Z004	Toggle latch and link plate
Z006	Plastic single disk holder
Z007	Truck disk holder
Z015	Anti-Luce short with nut
Z016	Anti-Luce long with nut
Z017	Anti-Luce weld on
Z0020	Slide on hinge
Z022	Drop side hinge
Z023	Spring bolt

Price Each
R 34.50
R 31.00
R 4.20
R 4.20
R 4.20
R 12.00
R 245.00
R 255.00
R 265.00
R 275.00
R 580.00
R 640.00
R 55.00
R 135.00
R 31.00
R 70.00
R 16.50
R 43.00
R 28.00
R 31.00
R 25.00
R 43.00
R 60.00
R 31.00



Prices are exclusive of VAT and are subject to change without prior notice.

E & OE

Stock Code	Description	Wheel Size
MS7.13"-1U	Un-galvanised Single	10" to 13"
MS7.13"-1G	Galvanised Single	10" to 13"
MS7.13"-2U	Un-galvanised Tandem	10" to 13"
MS7.13"-2G	Galvanised Tandem	10" to 13"
MS7.14"-1U	Un-galvanised Single	14"
MS7.14"-1G	Galvanised Single	14"
MS7.14"-2U	Un-galvanised Tandem	14"
MS7.14"-2G	Galvanised Tandem	14"
MS7.15"-1U	Un-galvanised Single	15"
MS7.15"-1G	Galvanised Single	15"
MS7.15"-2U	Un-galvanised Tandem	15"
MS7.15"-2G	Galvanised Tandem	15"

Price Each
R 280.00
R 300.00
R 425.00
R 445.00
R 310.00
R 340.00
R 480.00
R 525.00
R 370.00
R 380.00
R 520.00
R 560.00



MS7.14"-1U



MS7.15"-1U

Prices are exclusive of VAT and are subject to change without prior notice.

E & OE





NOTES

A large area of the page is filled with horizontal blue lines, serving as a template for handwritten notes.

**Western Cape:**

Saxenburg Road, Blackheath, Cape Town  
PO Box 281 Kuilsriver, 7579, South Africa  
Tel +27 (0)21 907 1900 Fax +27 (0)21 907 1999  
Email [information@burquip.co.za](mailto:information@burquip.co.za)

**Gauteng:**

48 Malcolm Moodie Crescent, Jetpark, Gauteng  
PO Box 25769, East Rand, 1462, South Africa  
Tel +27 (0)11 396 6000 Fax +27 (0)11 397 4019  
Email [salesjhb@burquip.co.za](mailto:salesjhb@burquip.co.za)

**Kwa-Zulu Natal:**

9 Clubhouse Place, Westmead, Pinetown  
PO Box 1076, Pinetown, 3600, South Africa  
Tel +27 (0)31 792 1020 Fax +27 (0)31 792 1018